

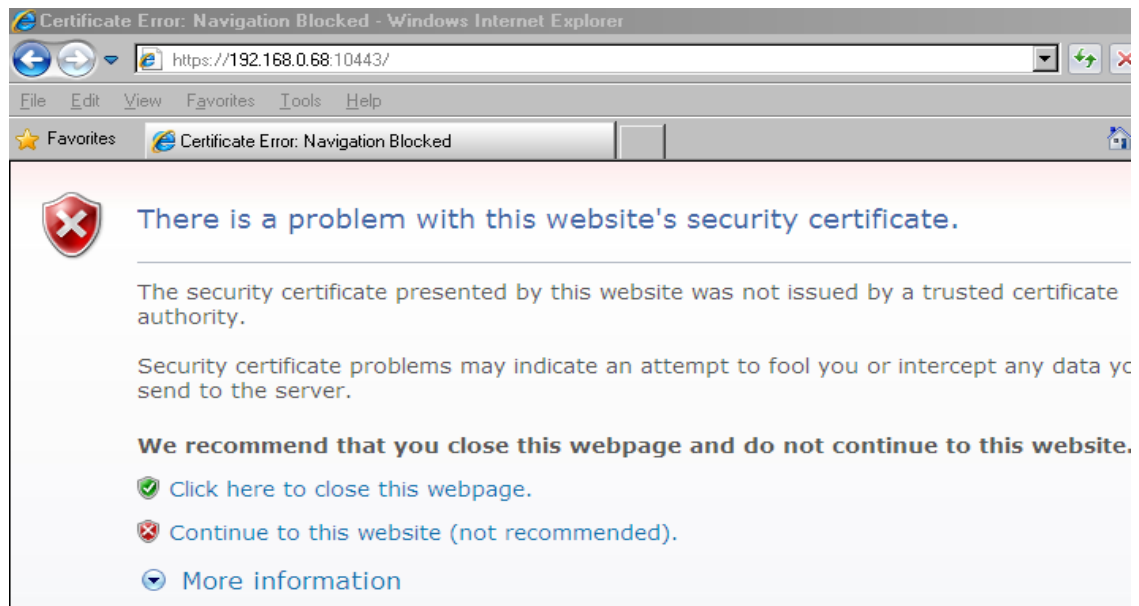
SSL certificate Installation

Procedure to install the SSL certificate for eScan Web console login page.

1. Fresh Installation

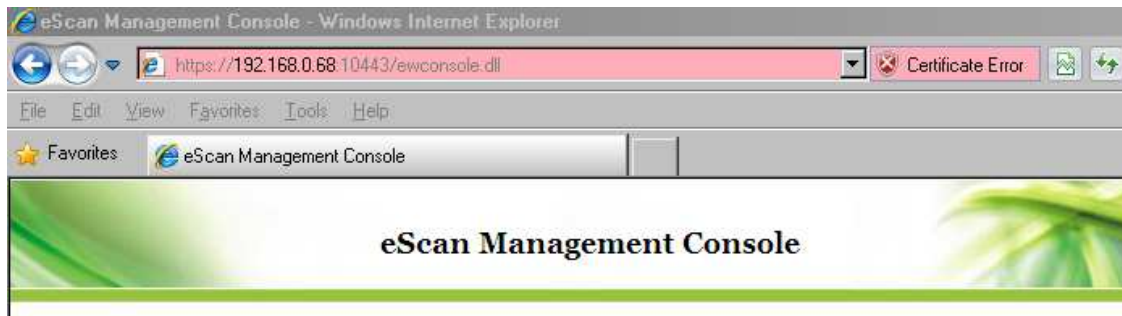
- Open Internet Explorer and type **https://<IP/hostname>:10443**
Where IP/hostname = eScan server IP or hostname
Here we have used 192.168.0.68 as eScan server IP.

Below is the error message you will receive before installing the SSL certificate

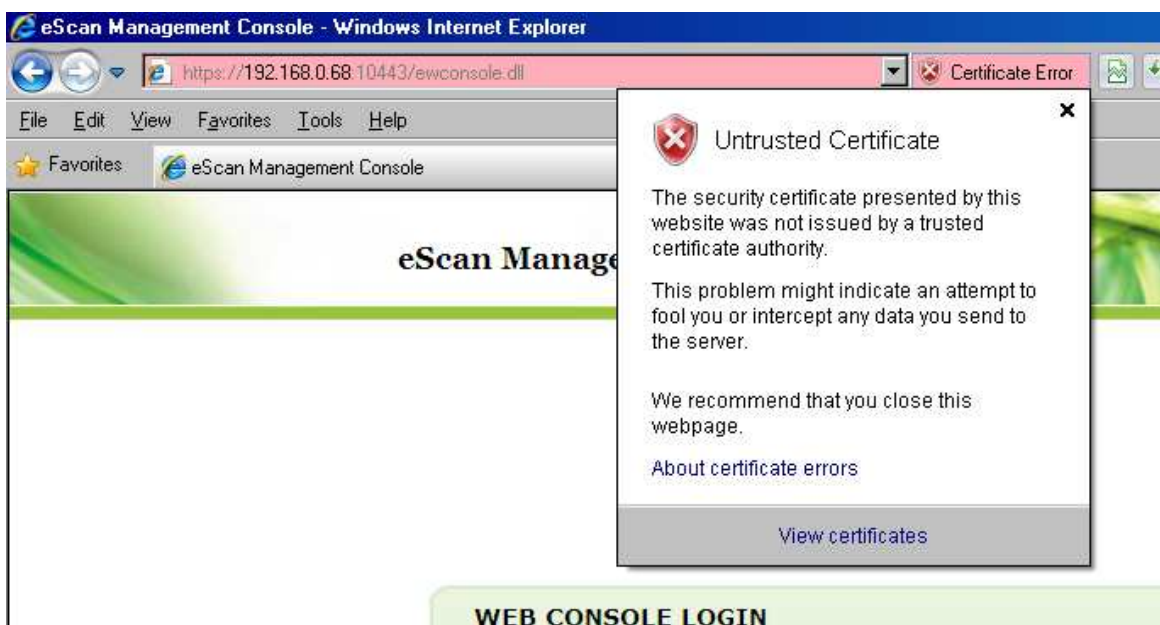


Click on – **“Continue to this website”** option.

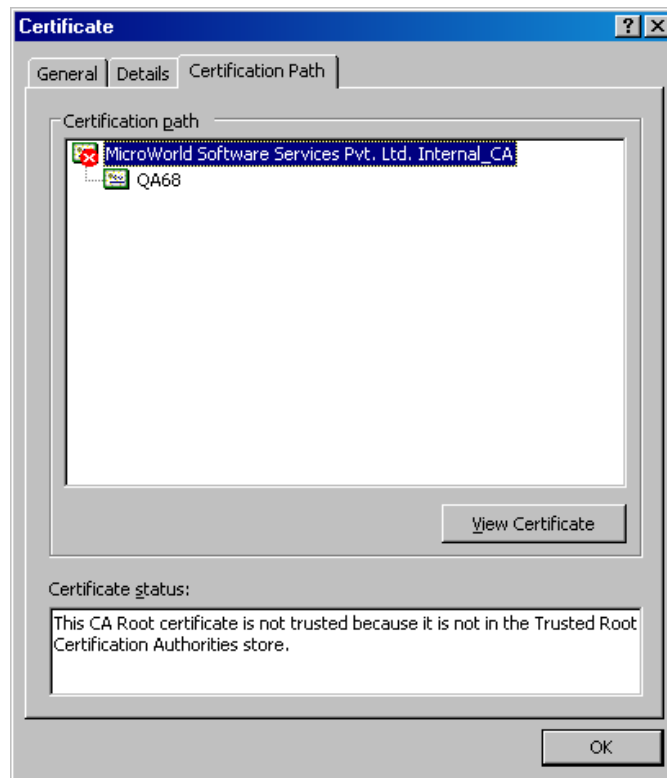
- As the certificate has not been added in the browser , you will get a certificate error .



- Click on the “Certificate Error” message and select “View Certificates”.



- Navigate to “**Certification Path**”
Select “**MicroWorld Software services pvt. ltd Internal_CA**” and then
Click on “**View Certificate**”



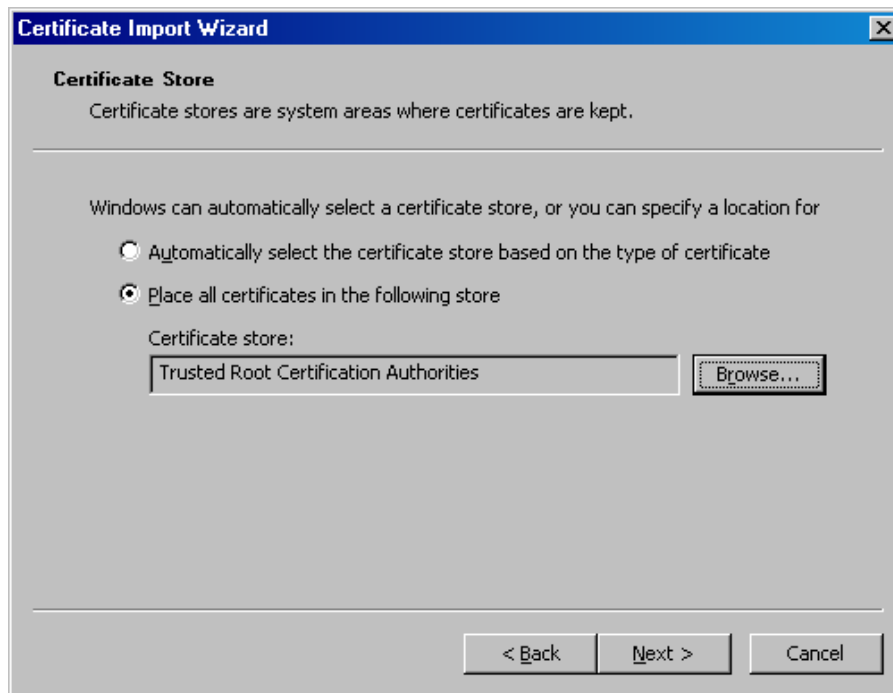
- Click on “Install Certificate”



- Click “Next”



- Select the option **"Place all certificates in the following store"** and click on **Browse** .
Select **"Trusted Root Certification Authorities"** from the menu and click **"OK"**



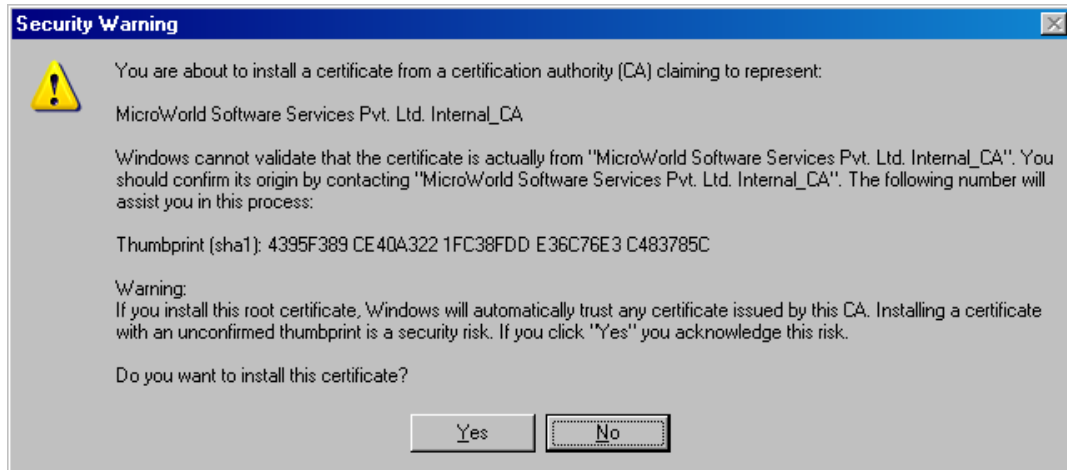
- Click **"Next"**



■ Click **“Finish”**

This will initiate the process of adding the certificate to the local certificate repository. Click **“Yes”**

Once the installation is complete , click **“OK”** and Restart the Browser.



This will install the necessary SSL certificates for eScan Web console Login page on your system.

2. Upgrade

In case the product has been upgraded, a fresh certificate will be issued, due to which the existing certificate will be null and void, hence browser will re-request the certificate to be added. Hence the certificate will have to be installed again.

The validity of the certificate is 360 days.