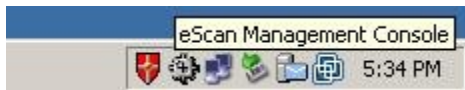


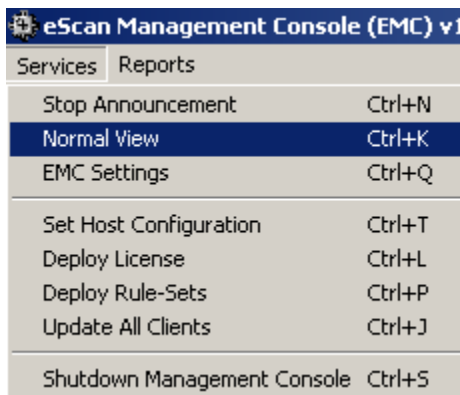
How to Create Groups in Escan Management Console (EMC)?

Please follow the below steps to create groups and deploy policies to groups:

Step 1: Double click on Escan Management console on the right hand corner of the taskbar shown in below screenshot.



Step 2: Click on “Services” menu and then click on “Normal View” option.

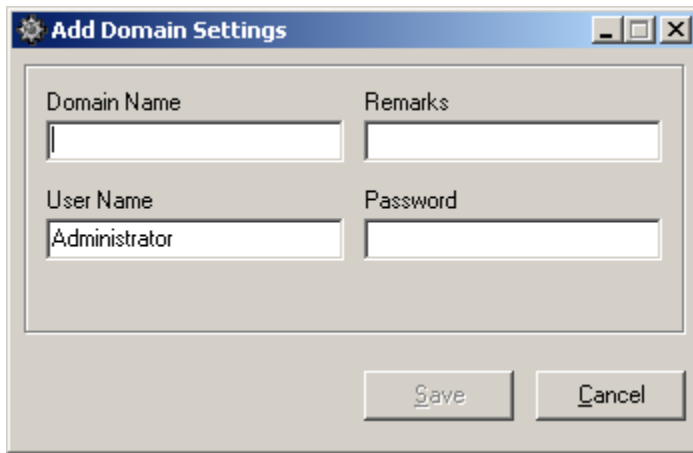


Step 3 Right click on the “default” domain and click on “Add domain”



IMP: “Add Domain” is equivalent to add group

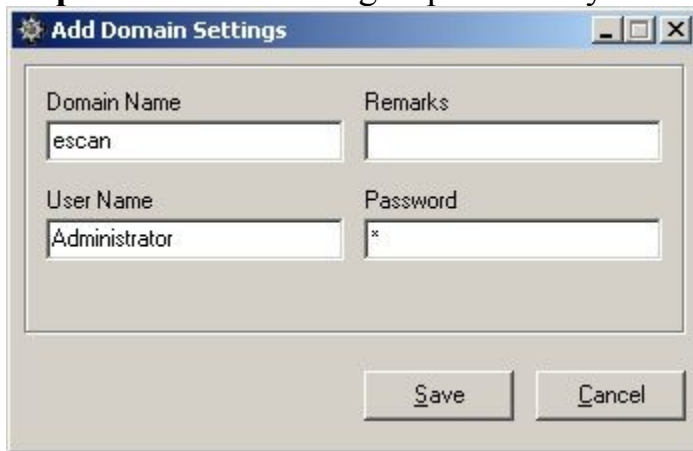
Step 4: Add a group name in the “Add domain settings”



Add Domain Settings

Domain Name	Remarks
<input type="text"/>	<input type="text"/>
User Name	Password
<input type="text" value="Administrator"/>	<input type="text"/>

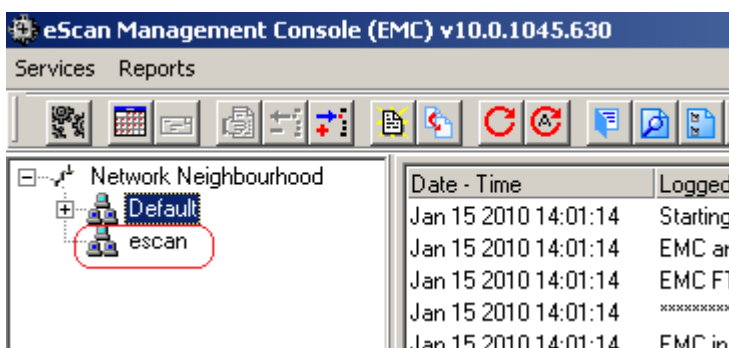
Step 5: Add escan as a group name or you can give any name this is just an example.



Add Domain Settings

Domain Name	Remarks
<input type="text" value="escan"/>	<input type="text"/>
User Name	Password
<input type="text" value="Administrator"/>	<input type="text" value="*"/>

Step 6: This will add escan as a group .



eScan Management Console (EMC) v10.0.1045.630

Services Reports

Network Neighbourhood

- Default
- escan

Date - Time	Logged
Jan 15 2010 14:01:14	Starting
Jan 15 2010 14:01:14	EMC an
Jan 15 2010 14:01:14	EMC FT
Jan 15 2010 14:01:14	*****
Jan 15 2010 14:01:14	FMC in

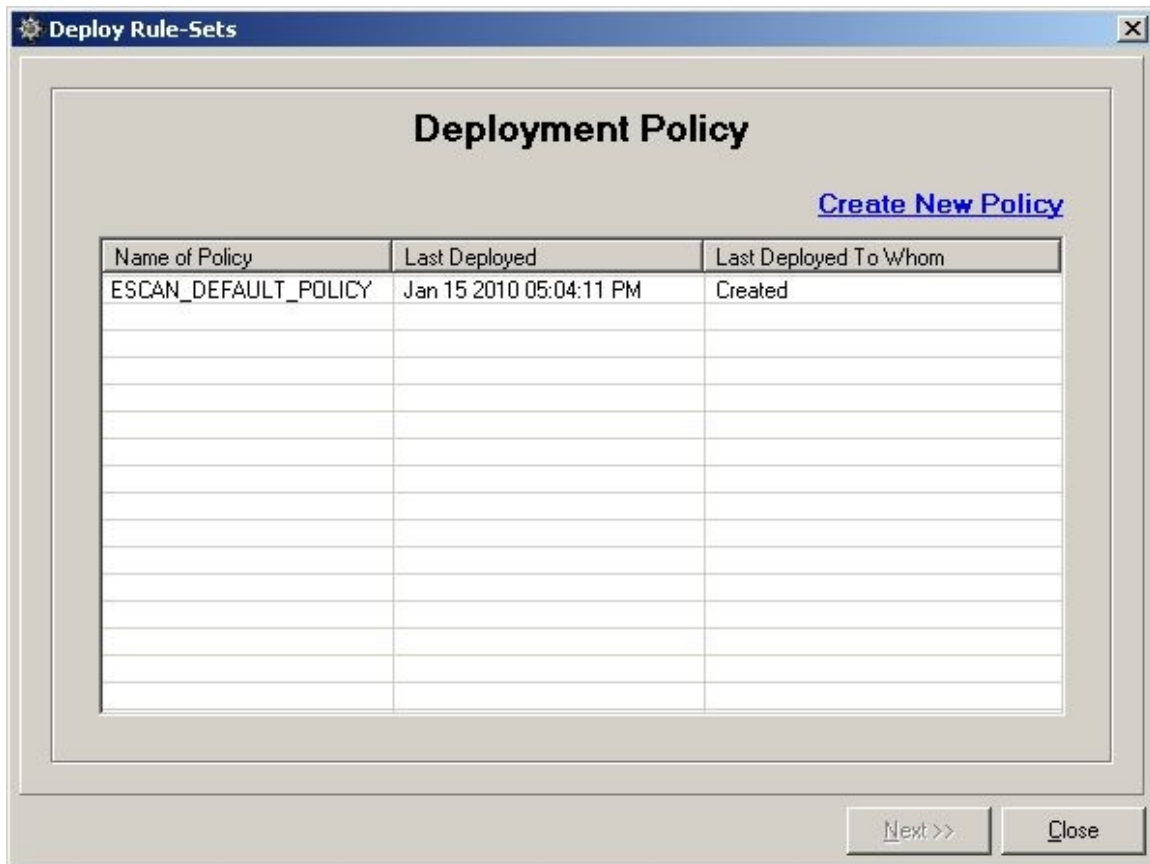
Step 7: in the new group, you can drag and drop computer which you wish put in the eScan group



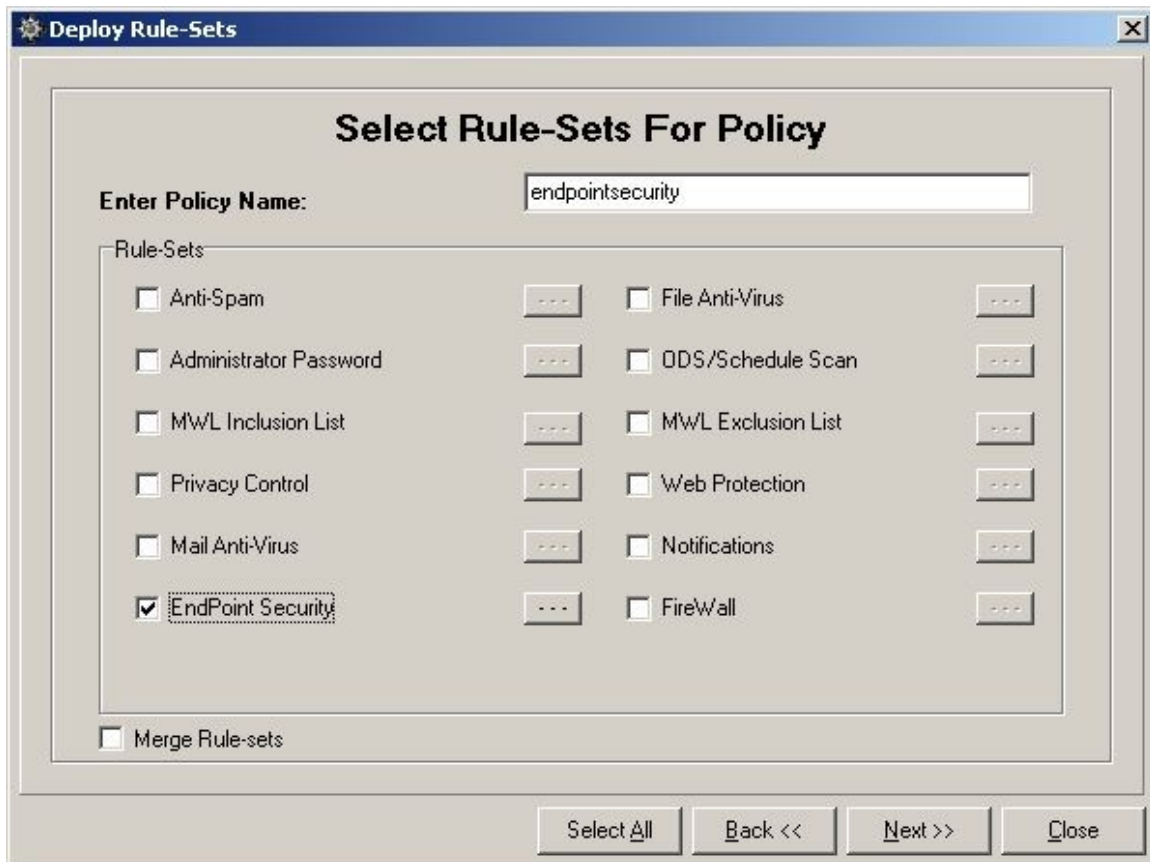
Step 8: If you want to deploy certain policy in the new group, click on “Services” menu, and then click on “Deploy Rule-sets”.



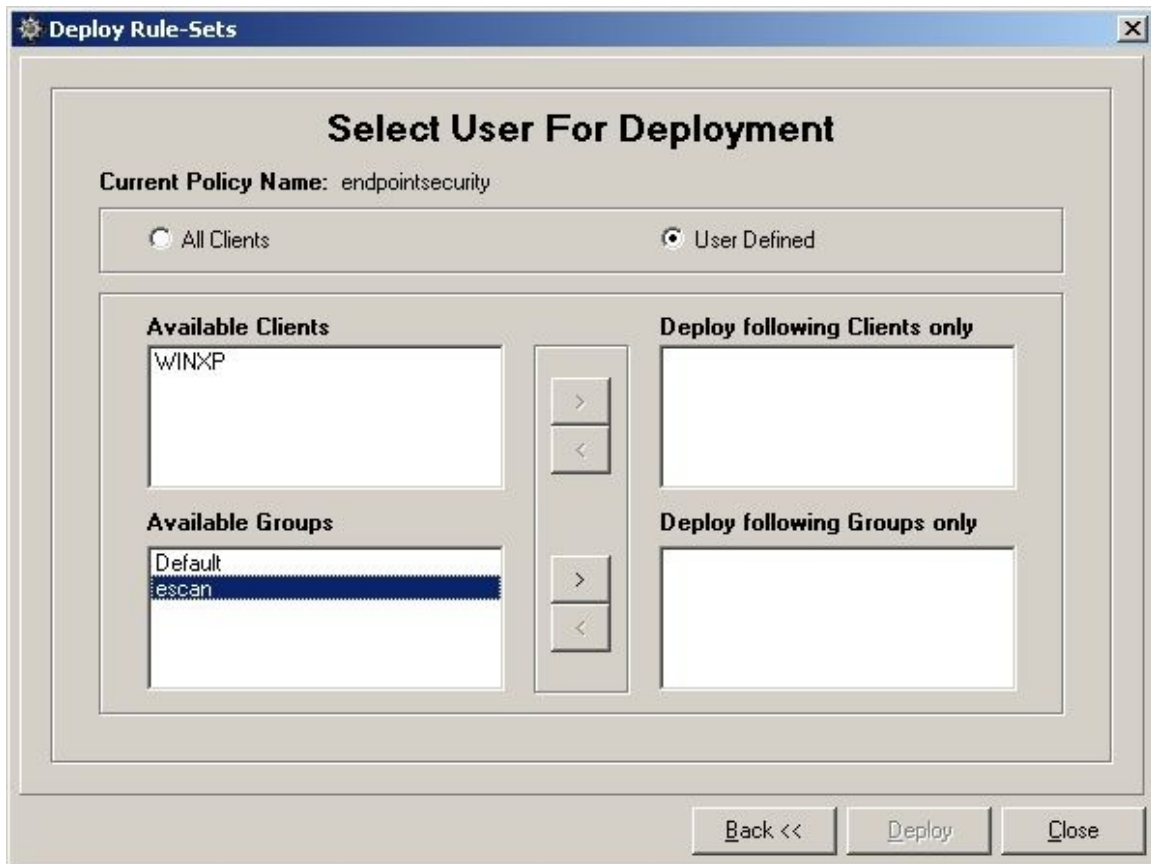
Step 9: Click on “Create new policy” like shown below.



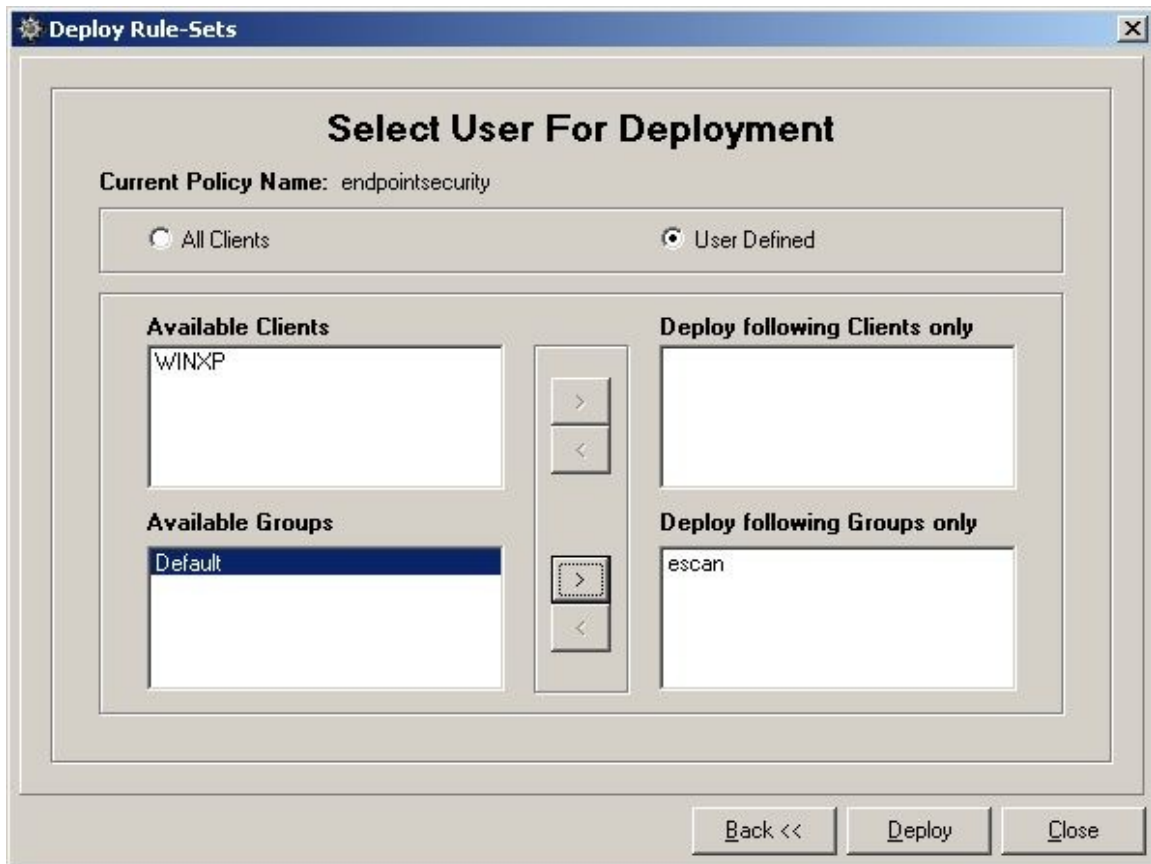
Step 10 Give policy name as endpoint security and then click on endpoint security and then click on next



Step 11: Select escan group for deployment of the policy



Step 12: After selecting escan group for deployment of policy and then click on deploy.



This is how new policy can be deployed on the newly created groups.