

# **This document provides information to install MailScan for Lotus Notes**

## **Software and Hardware Requirements**

- Windows 2000 / 2003 / XP / Vista / Windows 8 / Windows7 / 2008 R2  
(All 32-64 bit versions)
- RAM: 512 MB minimum (1 GB recommended)
- Hard Disk: 500 MB of Free Space.

## **Pre-requisites for Installation**

Before installing MailScan ensure that the following are done:

- Lotus Domino Server version 4.6.4a or above is installed on the Server.
- Lotus Domino Server's Administrator NSF file, required at the time of Installation.

### **NOTE :**

MailScan for Lotus Notes needs to be installed on the Lotus Domino Server itself.

MailScan will work with Lotus Domino version 4.6 and above

- Support for Domino versions 4.x.x to 7.x.x (32 bit)
- Support for Domino version 8.x.x (32 bit and 64 bit)

# Installation Process

Installation is very simple, a point and click operation and done using the built-in install wizard. A user-friendly interface prompts you and presents a range of choices. Instructions are displayed in the screens that give you specific information. To abort installation, select “Cancel” in any of the screen. This section gives the step-by-step installation process.

Download the latest version of the setup file of Mailscan for Lotus Notes (msln6\*.exe) and execute the same.

Screen in Figure 1.1 is displayed. This is the start up screen for installing the application.



Figure 1.1 Install – Opening Screen

Following instruction provides the details of each step for installation.

### Step 1:

In Figure 1.2, select Next, to begin installation. Screen in Figure 1.2 is displayed.

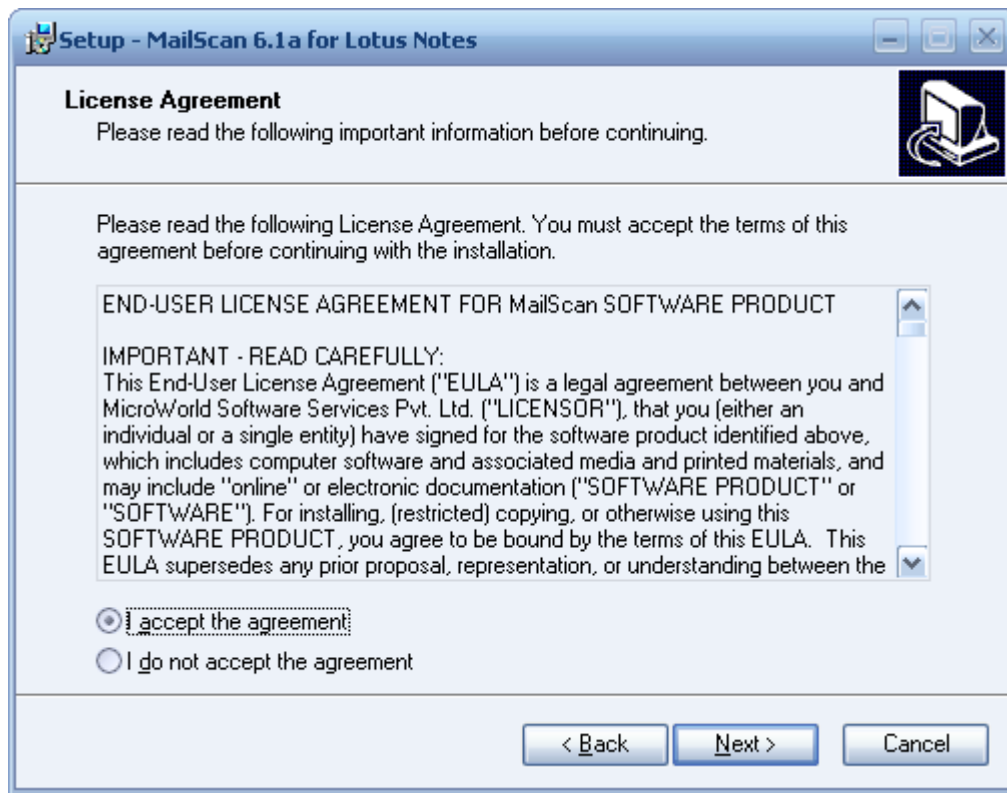
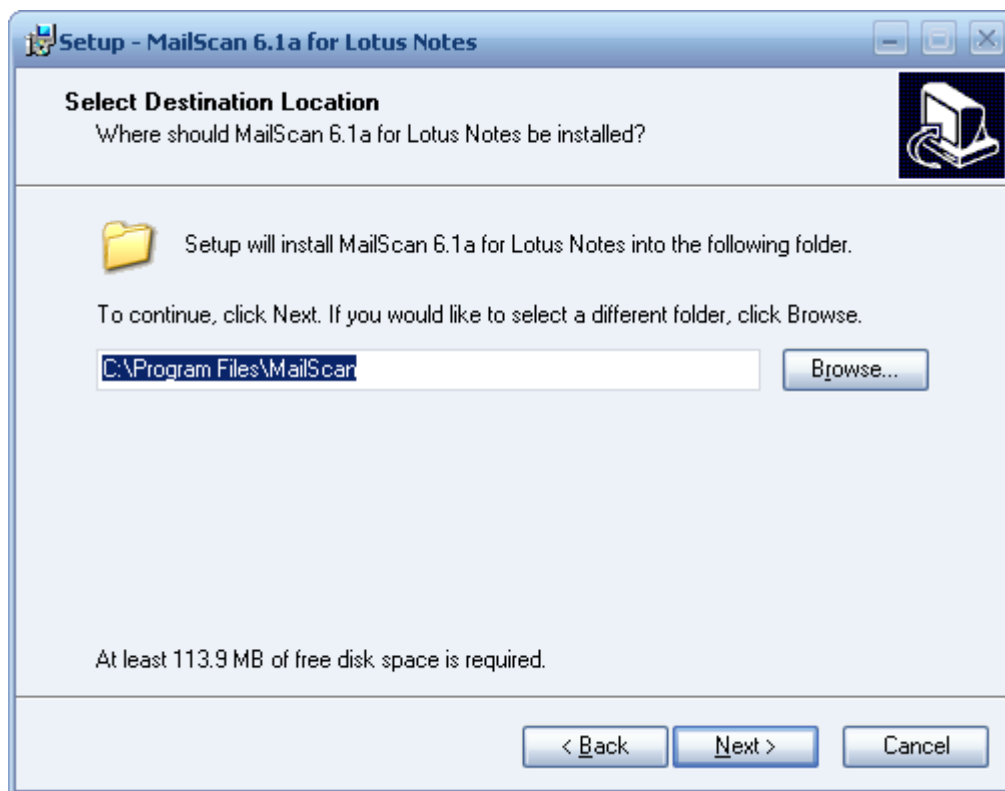


Figure 1.2 License Agreement

This screen shows the license agreement between you and MicroWorld. Read the instructions and select "**I accept the agreement**" radio button and click on **NEXT** to accept the terms and continue with the installation. If clicked on "**I do not accept the agreement**", the installation process will be aborted.

### Step 2:

If you select "**I accept the agreement**" radio button, click on **NEXT**, screen in Figure 1.3 is displayed.

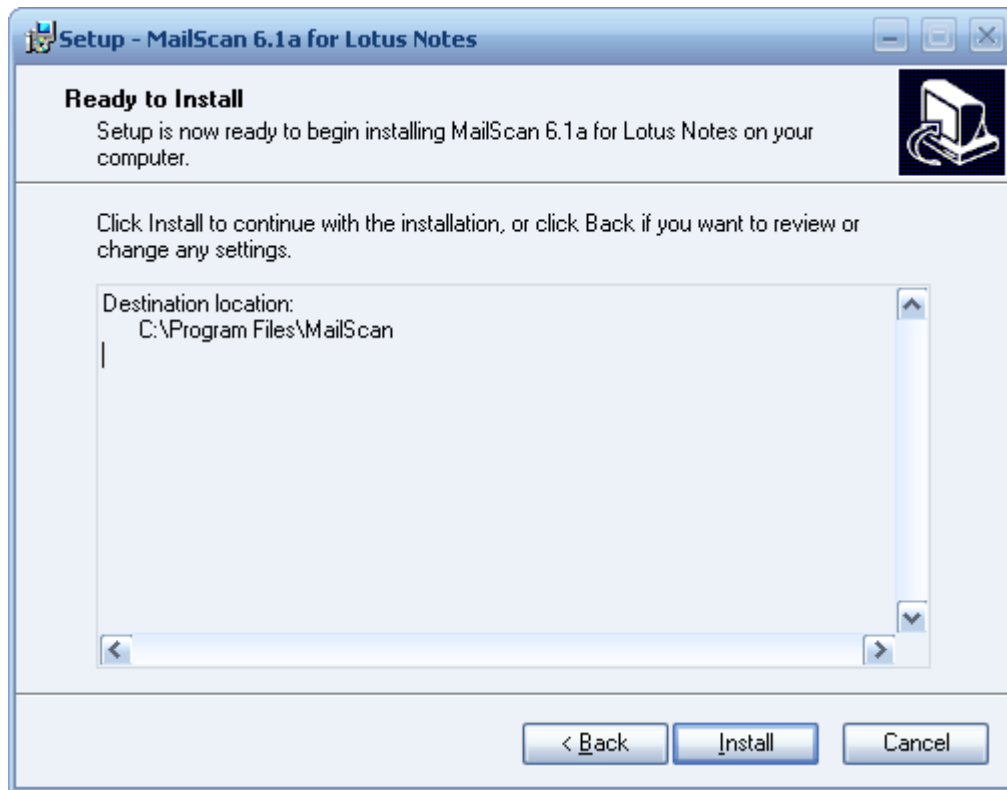


**Figure 1.3 Select Destination Folder/Directory**

You select the directory to install the application. The default path is displayed. To change the location, browse your PC and select the directory. Select **NEXT**.

### Step 3:

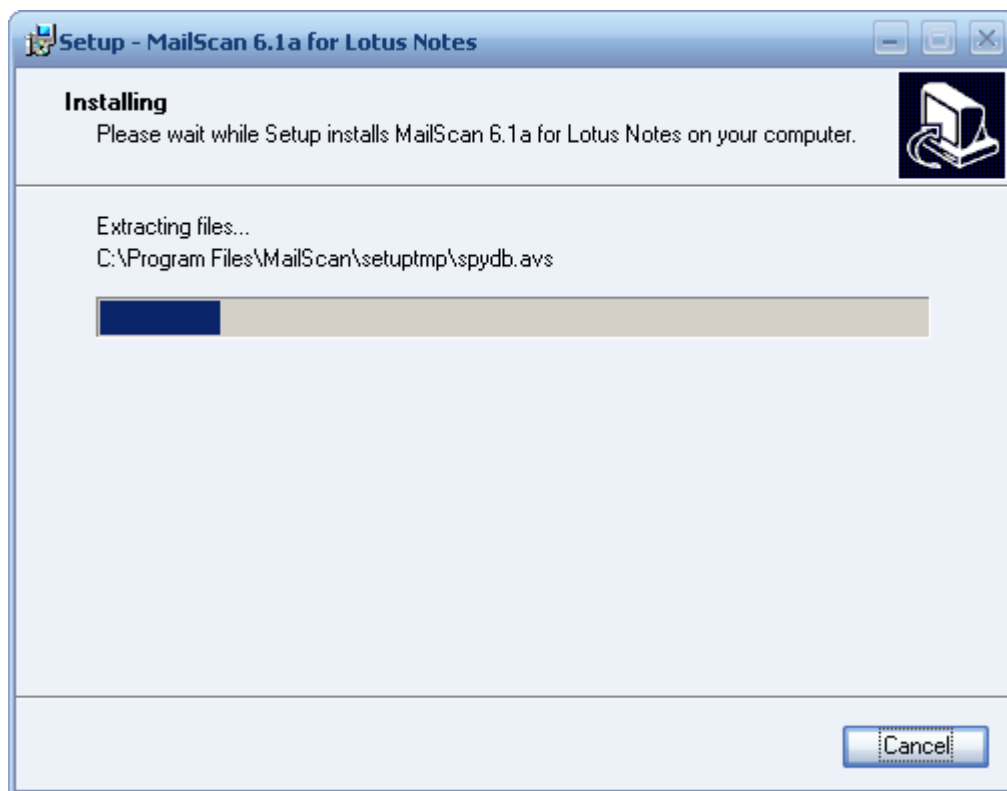
The application is ready to be installed. Select **Install**.



**Figure 1.4 Begin Installation**

### Step 4

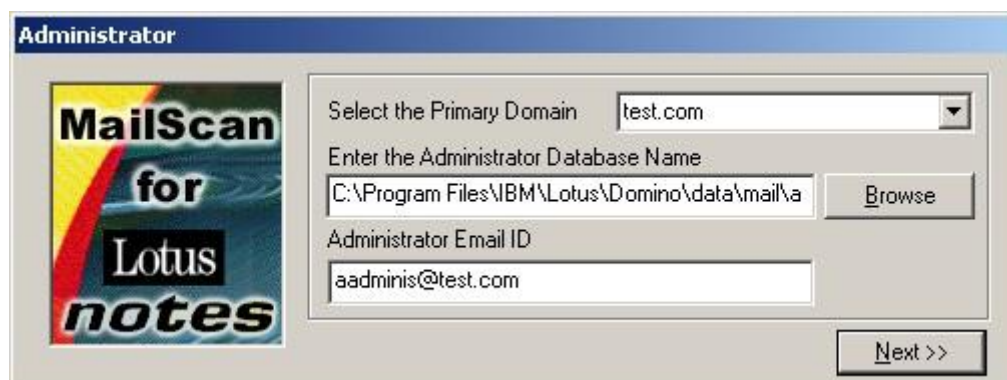
The Mailscan files are extracted and copied and uploaded into the default or the selected directory. A folder with the applications name is created. A progress bar showing status of installation is displayed.



**Figure 1.5 Extracting Files**

#### **Step 5**

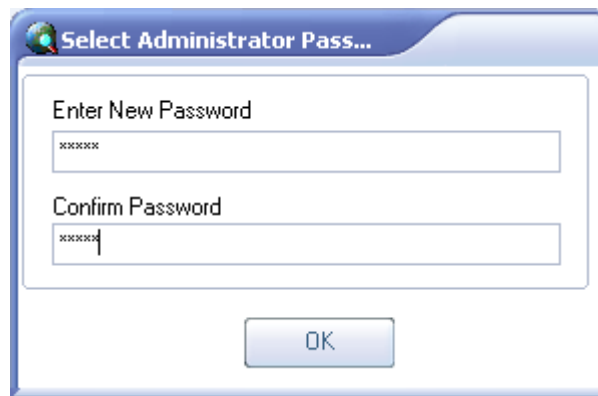
Enter a valid value for the fields, else the installation process does not proceed further. Select a valid primary domain. Enter / browse for the Administrator database file (i.e. .NSF file). After the NSF file is selected, the default email id of the Lotus Notes administrator is displayed.



**Figure 1.6 Primary Domain settings**

#### **Step 6**

Enter a password for Mailscan Administrator.



**Figure 1.7 Password for Mailscan Administrator**

### Step 7

This will display the Domain details as defined in the above step 5.



After clicking on the Finish button, **Figure 1.8** window is displayed informing about the product is under Evaluation period.

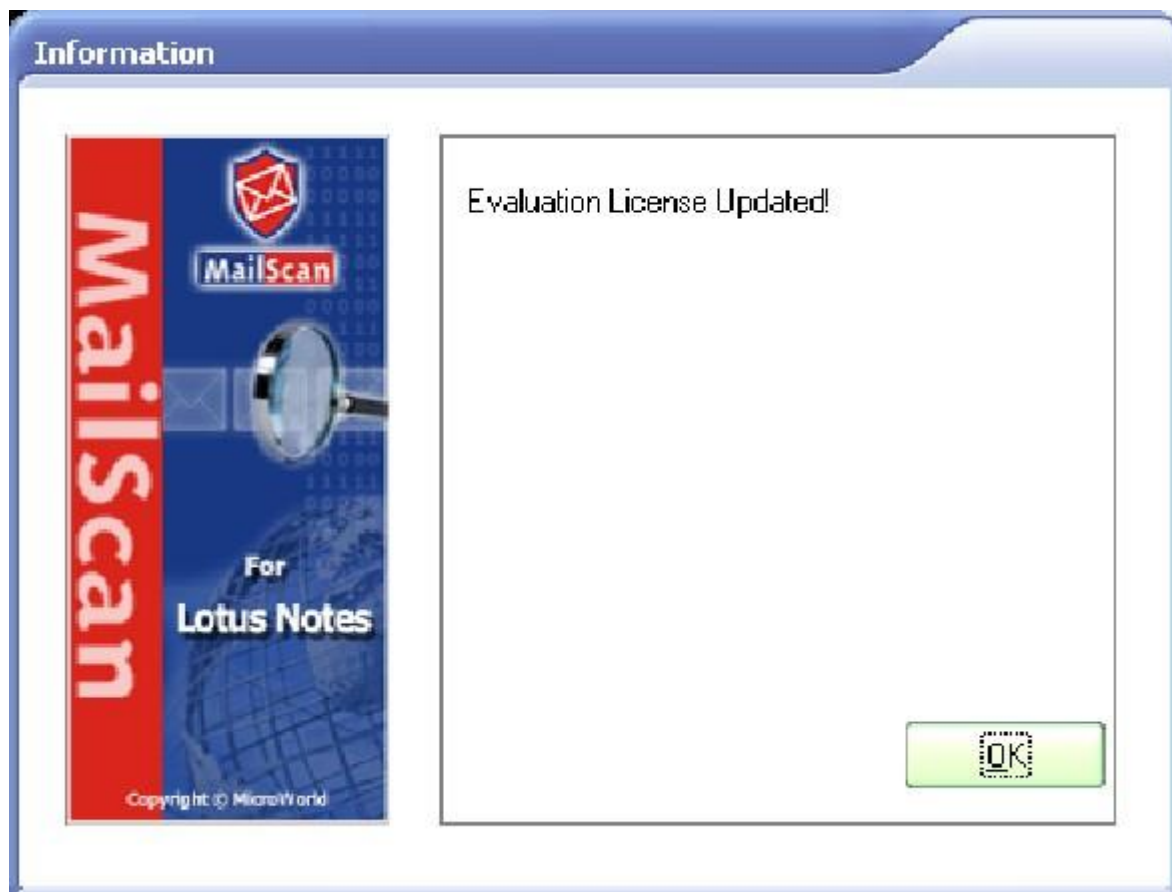
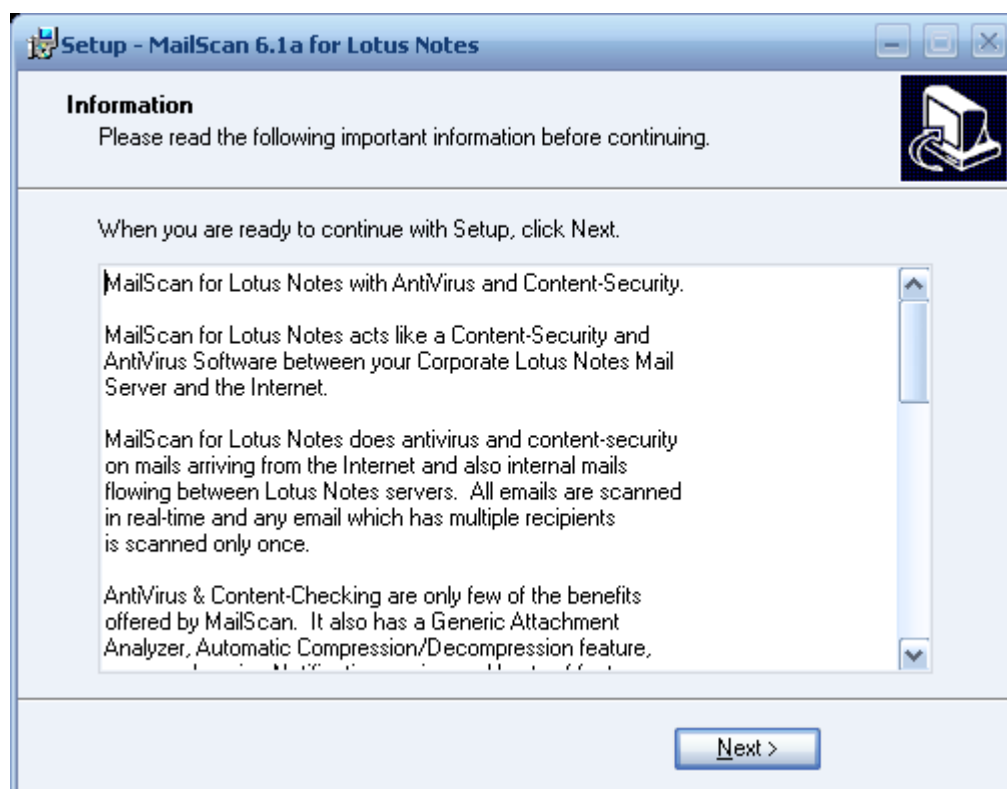


Figure 1.8 Evaluation License Status

## Step 8

Figure 1.9 displays information About MailScan for Lotus Notes and then click on the Next button.

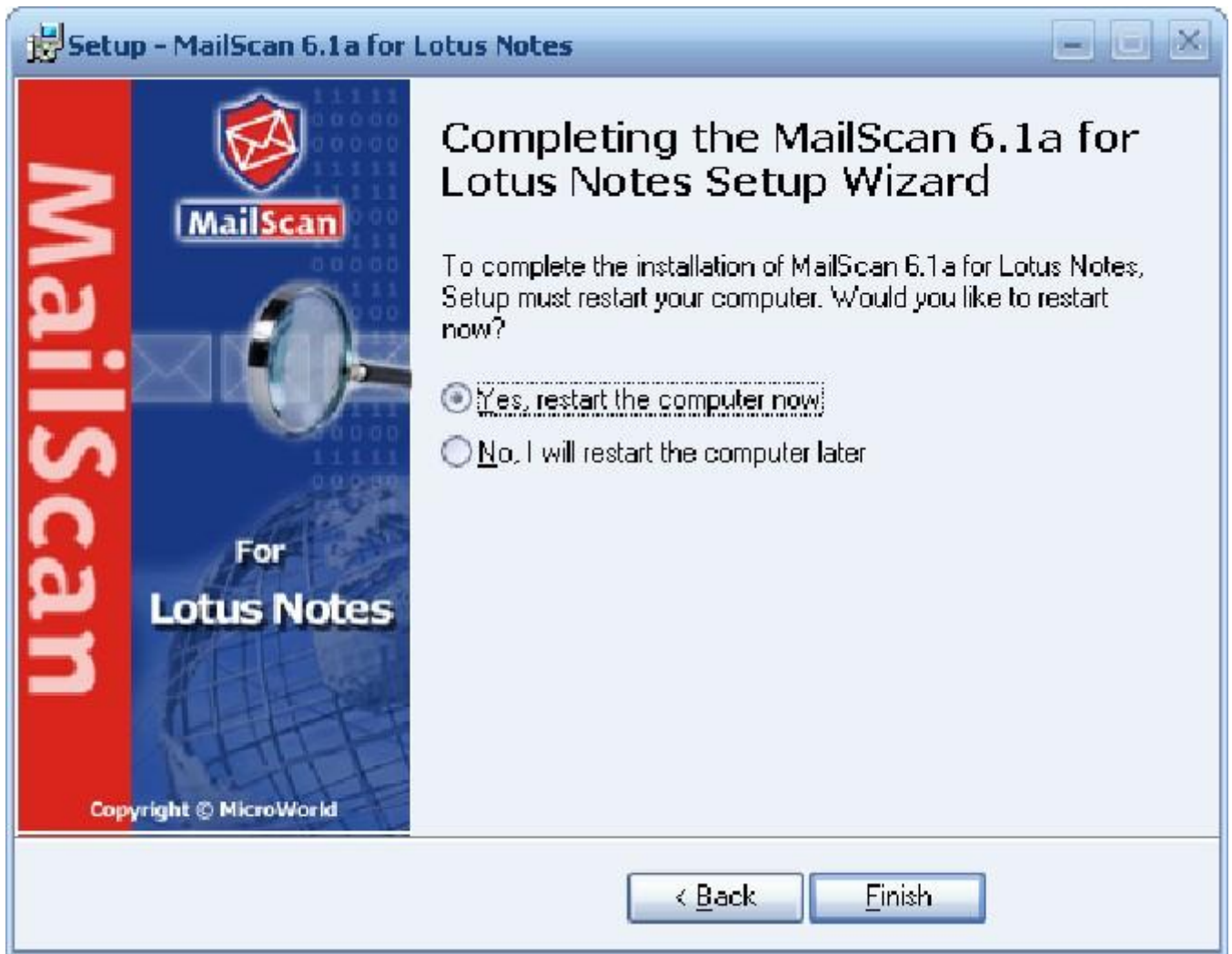




**Figure 1.9 Mailscan Information**

**Step 9**

Figure 1.10 displays the Installation completed window and select on Yes to restart the computer now and click on the Finish button to complete the setup.



**Figure 1.10 Istallation Complete**

MailScan for Lotus Notes is installed on your machine. The below mailsan icon will be added to the task bar at the bottom of your screen:

MailScan Icon:- 