

# How to Deploy eScan SBS for workstations using eScan Management Console (EMC)?

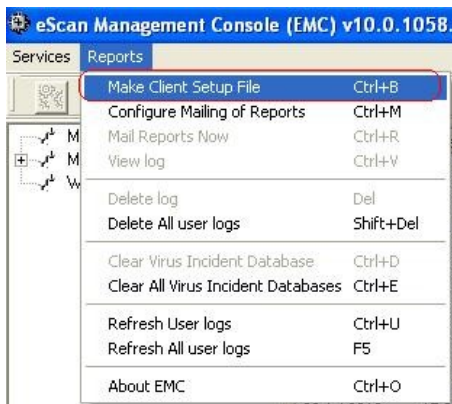
Please follow the below steps to deploy eScan SBS (snt2k3ek.exe):

**Step 1:** Double click on eScan Management console on the right hand corner of the taskbar shown in below screenshot.

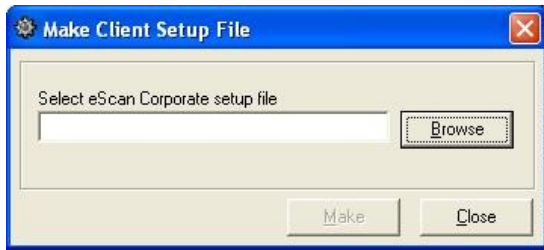


When the eScan Management Console opens for first time, it will prompt whether you want to start the announcement or not. Click on Start announcement.

**Step 2 :** Then click on “Reports” menu and then click on “Make Client Setup File” option.



**Step 3** Below window will appear in which you need to select the exe which needs to be install on workstations.



(Note: Copy snt2k3ek.exe on the hard disk on SBS server.)

Then click on “Browse” button to select the path where the snt2k3ek.exe is stored. Once you select the exe click on “Make” button.

The following window will appear

